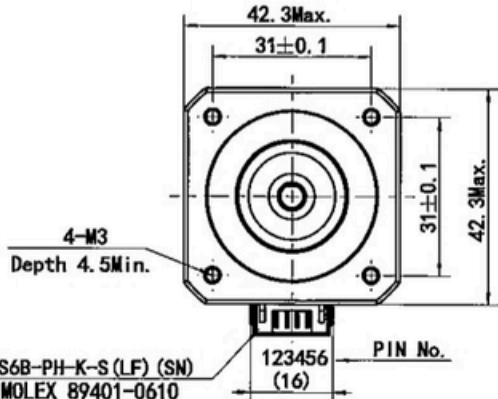
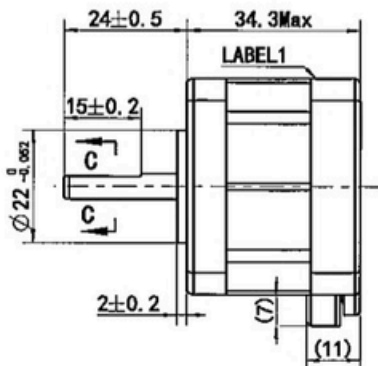
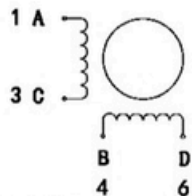


MS17HA4P4040



Wiring Diagram

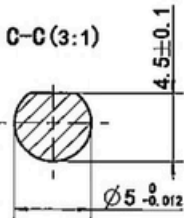


Exciting Sequence vs. Direction of Rotation

STEP	A	B	C	D	CCW
1	+	+	-	-	↑
2	-	+	+	-	
3	-	-	+	+	
4	+	-	-	+	

Clockwise view from mounting side

Specification	
1. Number of Phase	2
2. Step Angle	0.9°
3. Rated Voltage	11.6 V DC
4. Rated Current	0.4 Amp
5. Holding Torque	0.3 Nm Typ. (Two phase on/rated current)
6. Phase Resistance	29 ohm ±10% (20°C)
7. Phase Inductance	71 mH ±20%(1kHz 1V rms)
8. Rotor Inertia	38 gcm ²
9. Motor Weight	0.21 kg
10. Insulation Class	B (130°C)



Label1 Detail

STEPPING MOTOR
 Insulation: Class B, 60VDC Max.
 0.4Amps Holding; 0.3Ns
 3000RPM Max. **PIVEXIN**
 UL FILE No. E465363 XXX Factory ID

Label2 Detail

TYPE MS17HA4P4040
 XXXXXXXX YY/MM/DD
 Work Order Date Format

Unit:mm
 First angle method
 Tolerances for linear and angular dimensions without individual tolerance indications GB/T 1804-s eqv ISO 2768-1:m
 Geometrical tolerance for features without individual tolerance indications GB/T 1184-K eqv ISO 2768-2:K

Approve	
Standardize	
Process Review	
Check	
Design	
NAMES	SIGNATURE
DATE	DATE

PIVEXIN
TECHNOLOGY

Drawing No: 4611110015909 Rev. A1 SCALE: 1:1 Sheet 1 of 1

REV.	REVISION RECORD	DATE
A1	ECR:23-317, There are two positions	2023.03.27
A0	Original revision	2017.03.27